

# ALBANY-DOUGHERTY COUNTY

## QUICK FACTS



Albany-  
Dougherty  
Economic  
Development  
Commission

### ESTABLISHED

- 1836

### LOCATION

- Commercial, retail and cultural hub of region
- 35-minute flight to Atlanta
- Convenient access to major highways, transportation hubs and rest of country
- Access to nearby international airports
- UPS sorting facility
- Four colleges and universities in community
- Home of Marine Corps Logistics Base-Albany
- Abundant groundwater from Floridan Aquifer, one of world's most prolific aquifers
- Long, hot summers and short, mild winters; average temperature is 64.5 degrees
- Typical rainfall is 53 inches per year
- World-class health care by Phoebe Putney Health System

### TRANSPORTATION

- Georgia's second largest cargo airport by volume
- Access to Interstate 75, a major trade route
- Rail service by Norfolk Southern, Georgia-Florida
- With 5,000 miles of track, Georgia's rail system is most extensive in Southeastern United States
- Access to coastal ports, including Savannah, which is the fastest-growing container port in the United States
- Convenient to Cordele Intermodal Services' inland port, for ease of transportation and access to Port of Savannah
- Georgia 11th largest exporting state (dollar value)

### POPULATION AND AFFORDABILITY

- Georgia is ninth most populous state
- Albany Metropolitan Statistical Area is Georgia's eighth largest
- Albany MSA's cost-of-living is 82 percent of national average

### BUSINESS FOCUSED

- Georgia No. 1 in United States for business
- Forbes "Best Small Places to do Business"
- Deemed "Entrepreneur Friendly" by governor
- Incentive zones: Tier 1, Opportunity, HUB, Military
- ISO fire rating of two

### DIVERSIFIED ECONOMY

- Industrial base strong on logistics and defense, health care, corporate services, manufacturing
- Center of 17-county market area with population of 460,000
- Strong retail sector with growth opportunities
- Hub of state's agricultural industry
- Existing industries include Procter & Gamble, MillerCoors, Mars Chocolate North America, Coats & Clark, Pfizer, SASCO Chemical Group, Thrush Aircraft, Tara Foods
- Clinical campuses for the Medical College of Georgia, University of Georgia College of Pharmacy

### TELECOMMUNICATIONS

- Advanced data services, including Frame Relay; Native Mode LAN Interconnection/MetroEthernet; optical services up to and including Dense Wave Data Multiplexing
- DS1, 2 and 3 services available

### EDUCATION

- Four colleges and universities
- Dougherty County School System has enrollment of about 16,000 students
- National Blue Ribbon Schools of Excellence
- International Baccalaureate Program
- College and Career Academy

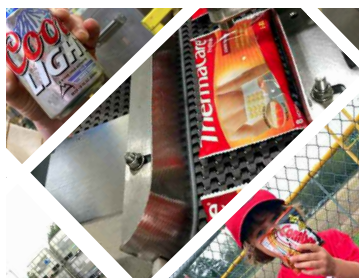
### RECREATION

- Flint River, lakes and other water recreation
- Zoo, aquarium, hunting, golf, riverfront trails
- Museums, theater, symphony, planetarium, ballet
- Mardi Gras festival, international festival, parades, marathon, college sports, bike races

### DEMOGRAPHICS

- County population: 92,969
- Albany Metropolitan Statistical Area: 155,694
- Total Population Median Age: 31.1
- Labor draw: 77,809 (Albany MSA); 166,078 (region)
- Median household income (Albany MSA): \$28,810
- Mean household income (Albany MSA): \$38,460

**MADE IN ALBANY, GA**  
PRODUCING GOODS  
USED BY PEOPLE  
AROUND THE WORLD  
EVERY SINGLE DAY



### ON THE TUBE

Go to [youtube.com/choosealbany](http://youtube.com/choosealbany) to watch our award-winning videos and learn what makes Albany a one-of-a-kind place.



**WE ARE  
ALBANY**

The  
story of  
who  
we are.